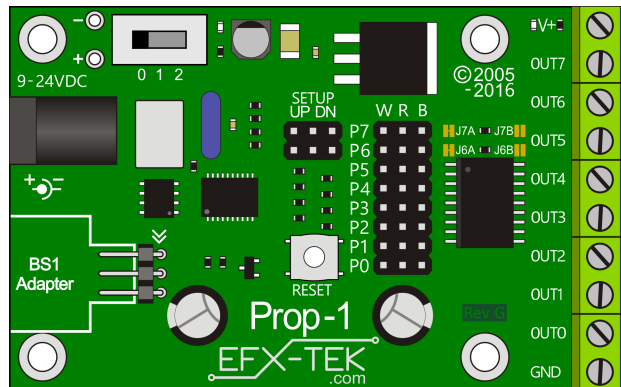


## DESCRIPTION

The Prop-1 Rev G is the latest release of our popular controller. Due to the end-of-production of the DIP (in socket) version of the ULN2803A, the Rev G PCB uses the SMD variant as shown below.



In order to facilitate disconnection of the ULN input circuitry from P6 and P7, new jumpers have added (just above the ULN2803).

J6A and J7A: These jumpers connect the Prop-1 processor (pins P6.W and P7.W) to the ULN2803.

To disconnect either pin from the ULN, use a craft knife to carefully cut the trace between the pads. To restore the connection, use a soldering iron to reconnect the pads with a bit of solder.

This graphic illustrates the states of the J6A and J7A jumpers.



Jumpers J6B and J7B allow the OUT6 and OUT7 terminal blocks to be used as 12v inputs; the jumpers are not connected in production. To use either of these as an input:

- 1) Sever JxA jumper to disconnect input of ULN2803A
- 2) Use solder to connect JxB jumper to enable input
- 3) Set the associated SETUP jumper to the DN position
- 4) Connect N.O. button or switch between V+ and the OUTx terminal used as an input

**WARNING:** The maximum input voltage is 12V when using this configuration. Exceeding this specification will cause damage to the Prop-1 controller.